

Teenage Drivers



Section 4: Teenage Drivers

2

<u>Trends</u>	
Teenage Driver Crashes 1999-2008.....	52
<u>Counties</u>	
Teenage Driver Crashes by County.....	53
<u>Persons Involved</u>	
Restraint Use	54
Number of Occupants in Teen Driven Vehicles	54
<u>Drivers</u>	
Gender.....	54
Previous Driving Violations	54
Alcohol.....	54
Driver Age.....	55
<u>Crash Conditions</u>	
Month.....	56
Day of Week	56
Hour.....	57
Speed Limit.....	58
Travel Speed	58
Crash Severity	59
Violations	59
Contributing Factors	60
Teenage Driver 2008 Fact Sheet.....	61-62

0

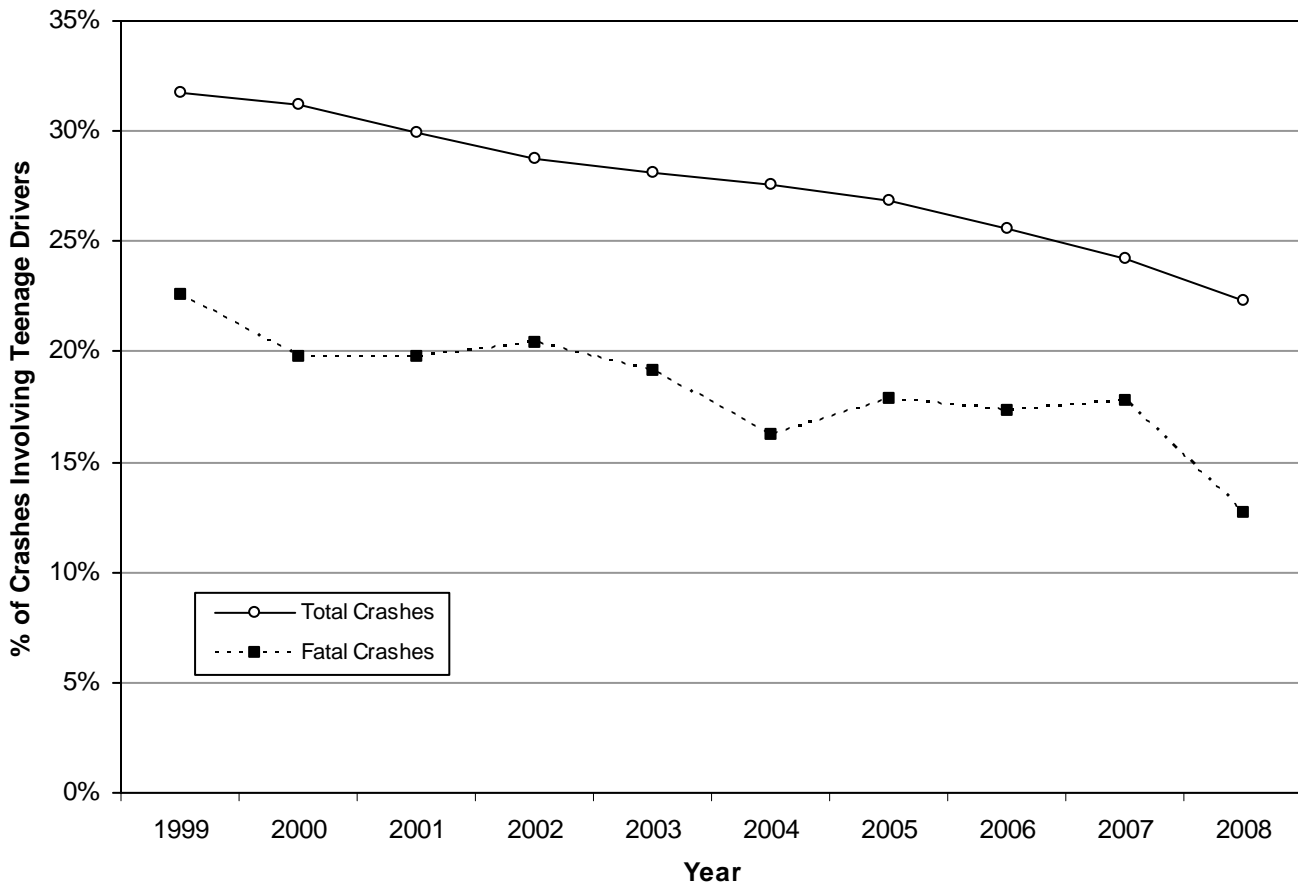
0

8

Trends

Teenage Driver Crashes (Utah 1999-2008)

Teenage Driver Crashes												
Year	Property Damage Only			Injury			Fatal			Total		
	All #	Teen Driver #	%	All #	Teen Driver #	%	All #	Teen Driver #	%	All #	Teen Driver #	%
1999	32,971	10,406	31.6%	19,513	6,281	32.2%	318	72	22.6%	52,802	16,759	31.7%
2000	33,269	10,252	30.8%	19,564	6,263	32.0%	318	63	19.8%	53,151	16,578	31.2%
2001	33,113	9,686	29.3%	19,332	6,006	31.1%	258	51	19.8%	52,703	15,743	29.9%
2002	33,542	9,478	28.3%	19,552	5,776	29.5%	274	56	20.4%	53,368	15,310	28.7%
2003	31,842	8,807	27.7%	18,285	5,321	29.1%	262	50	19.1%	50,389	14,178	28.1%
2004	34,222	9,397	27.5%	19,423	5,431	28.0%	260	42	16.2%	53,905	14,870	27.6%
2005	35,158	9,225	26.2%	19,545	5,434	27.8%	235	42	17.9%	54,938	14,701	26.8%
2006	37,674	9,427	25.0%	18,264	4,928	27.0%	249	43	17.3%	56,187	14,398	25.6%
2007	42,368	9,990	23.6%	18,619	4,808	25.8%	258	46	17.8%	61,245	14,844	24.2%
2008	38,997	8,512	21.8%	17,125	4,007	23.4%	245	31	12.7%	56,367	12,550	22.3%
Total	353,156	95,180	27.0%	189,222	54,255	28.7%	2,677	496	18.5%	545,055	149,931	27.5%



- Teenage drivers (aged 15-19 years) are a special concern because of their high crash rates and lack of driving experience.
- The 10-year trend shows that 27.5% of all crashes in Utah involved a teenage driver with a decreasing trend over the last 10 years.
- Fatal teenage driver crashes have also shown a decreasing trend. In 1999 the percentage of fatal teenage driver crashes was 22.6% and has decreased to 12.7% in 2008.

Counties

Teenage Driver Crashes by County (Utah 2008)

Teenage Driver Crashes												
County	PDO Crashes			Injury Crashes			Fatal Crashes			Total		
	All #	Teen Driver #	%	All #	Teen Driver #	%	All #	Teen Driver #	%	All #	Teen Driver #	%
Sanpete	188	64	34.0%	108	35	32.4%	4	0	0.0%	300	99	33.0%
Cache	1,421	430	30.3%	592	179	30.2%	5	0	0.0%	2,018	609	30.2%
Davis	3,295	859	26.1%	1,546	416	26.9%	13	0	0.0%	4,854	1,275	26.3%
Utah	5,528	1,375	24.9%	2,865	792	27.6%	38	6	15.8%	8,431	2,173	25.8%
Weber	2,979	773	25.9%	1,339	336	25.1%	15	4	26.7%	4,333	1,113	25.7%
Washington	1,331	314	23.6%	760	214	28.2%	13	2	15.4%	2,104	530	25.2%
Uintah	610	129	21.1%	197	51	25.9%	9	1	11.1%	816	181	22.2%
Iron	561	118	21.0%	255	51	20.0%	3	1	33.3%	819	170	20.8%
Salt Lake	17,276	3,584	20.7%	7,465	1,542	20.7%	62	11	17.7%	24,803	5,137	20.7%
Carbon	385	74	19.2%	107	28	26.2%	2	0	0.0%	494	102	20.6%
Tooele	543	109	20.1%	244	55	22.5%	15	0	0.0%	802	164	20.4%
Juab	237	46	19.4%	95	19	20.0%	5	0	0.0%	337	65	19.3%
Morgan	179	36	20.1%	33	5	15.2%	2	0	0.0%	214	41	19.2%
Sevier	332	49	14.8%	145	36	24.8%	6	1	16.7%	483	86	17.8%
Duchesne	440	67	15.2%	122	29	23.8%	2	0	0.0%	564	96	17.0%
Millard	276	40	14.5%	119	25	21.0%	6	0	0.0%	401	65	16.2%
Box Elder	763	105	13.8%	296	64	21.6%	7	2	28.6%	1,066	171	16.0%
Grand	128	16	12.5%	93	20	21.5%	4	0	0.0%	225	36	16.0%
Emery	181	30	16.6%	64	8	12.5%	6	1	16.7%	251	39	15.5%
Wasatch	485	70	14.4%	151	27	17.9%	1	0	0.0%	637	97	15.2%
Rich	68	12	17.6%	26	2	7.7%	1	0	0.0%	95	14	14.7%
Wayne	74	10	13.5%	29	5	17.2%	1	0	0.0%	104	15	14.4%
Summit	935	128	13.7%	220	33	15.0%	10	1	10.0%	1,165	162	13.9%
Beaver	169	22	13.0%	69	11	15.9%	2	0	0.0%	240	33	13.8%
Garfield	143	18	12.6%	44	3	6.8%	2	0	0.0%	189	21	11.1%
Daggett	40	5	12.5%	15	1	6.7%	0	0	0.0%	55	6	10.9%
Kane	188	11	5.9%	49	10	20.4%	3	1	33.3%	240	22	9.2%
San Juan	226	17	7.5%	71	9	12.7%	6	0	0.0%	303	26	8.6%
Piute	16	1	6.3%	6	1	16.7%	2	0	0.0%	24	2	8.3%
Statewide	38,997	8,512	21.8%	17,125	4,007	23.4%	245	31	12.7%	56,367	12,550	22.3%

- Overall, Sanpete (33.0%), Cache (30.2%), and Davis (26.3%) counties had the highest percentages of crashes involving a teenage driver.
- Iron (33.3%), Kane (33.3%), Box Elder (28.6%), and Weber (26.7%) counties had the highest percentages of fatal crashes involving a teenage driver.
- Overall, Piute (8.3%), San Juan (8.6%), and Kane (9.2%) counties had the lowest percentages of crashes involving a teenage driver.
- Statewide, teenage driver crashes represented 22.3% of all crashes and 12.7% of all fatal crashes.



Persons Involved

Restraint Use of Teen Drivers and Their Passengers (Utah 2008)

Persons (Teen Driver and Passengers)								
Restraint Use	Non-Injured		Injured		Killed		Total	
	#	%	#	%	#	%	#	%
Restrained	14,678	98.1%	2,530	88.4%	9	64.3%	17,217	96.5%
Unrestrained	281	1.9%	333	11.6%	5	35.7%	619	3.5%
Total	14,959	100.0%	2,863	100.0%	14	100.0%	17,836	100.0%

- Overall, most teen drivers and their passengers were restrained (96.5%).
- Only 64.3% of occupants killed in teenage driven vehicles were restrained.
- In fact, teen drivers and their passengers that were unrestrained were 15 times more likely than restrained occupants to be killed in a crash.

Number of Occupants in Teenage Driven Vehicles (Utah 2008)

Teenage Driven Vehicles								
Number of Occupants	PDO Crashes		Injury Crashes		Fatal Crashes		Total	
	#	%	#	%	#	%	#	%
1	6,863	73.1%	2,770	63.3%	18	56.3%	9,651	70.0%
2	1,720	18.3%	1,072	24.5%	10	31.3%	2,802	20.3%
3	507	5.4%	326	7.5%	1	3.1%	834	6.0%
4 or more	296	3.2%	206	4.7%	3	9.4%	505	3.7%
Total	9,386	100.0%	4,374	100.0%	32	100.0%	13,792	100.0%

- Over two-thirds of teenage driven vehicles (70.0%) in crashes contained only the teenage driver.
- In comparison, one-half (56.3%) of the teenage driven vehicles in fatal crashes contained only the driver.

Drivers

Gender of Teenage Drivers in Crashes (Utah 2008)

Teenage Drivers								
Gender	PDO Crashes		Injury Crashes		Fatal Crashes		Total	
	#	%	#	%	#	%	#	%
Male	4,928	52.5%	2,246	51.3%	26	81.3%	7,200	52.2%
Female	4,412	47.0%	2,117	48.4%	6	18.8%	6,535	47.4%
Unknown	46	0.5%	11	0.3%	0	0.0%	57	0.4%
Total	9,386	100.0%	4,374	100.0%	32	100.0%	13,792	100.0%

- The majority of teen drivers in all motor vehicle crashes (52.2%) and fatal crashes (81.3%) were male.
- Crashes involving male teen drivers were 3.9 times more likely to be fatal than female teen driver crashes.

Previous Driving Violations of Teens in Fatal Crashes (Utah 2008)

- Of the 32 teenage drivers in fatal crashes, 12 (37.5%) had been previously convicted of a moving traffic violation in the past three years.

Alcohol Involvement of Teenage Drivers (Utah 2008)

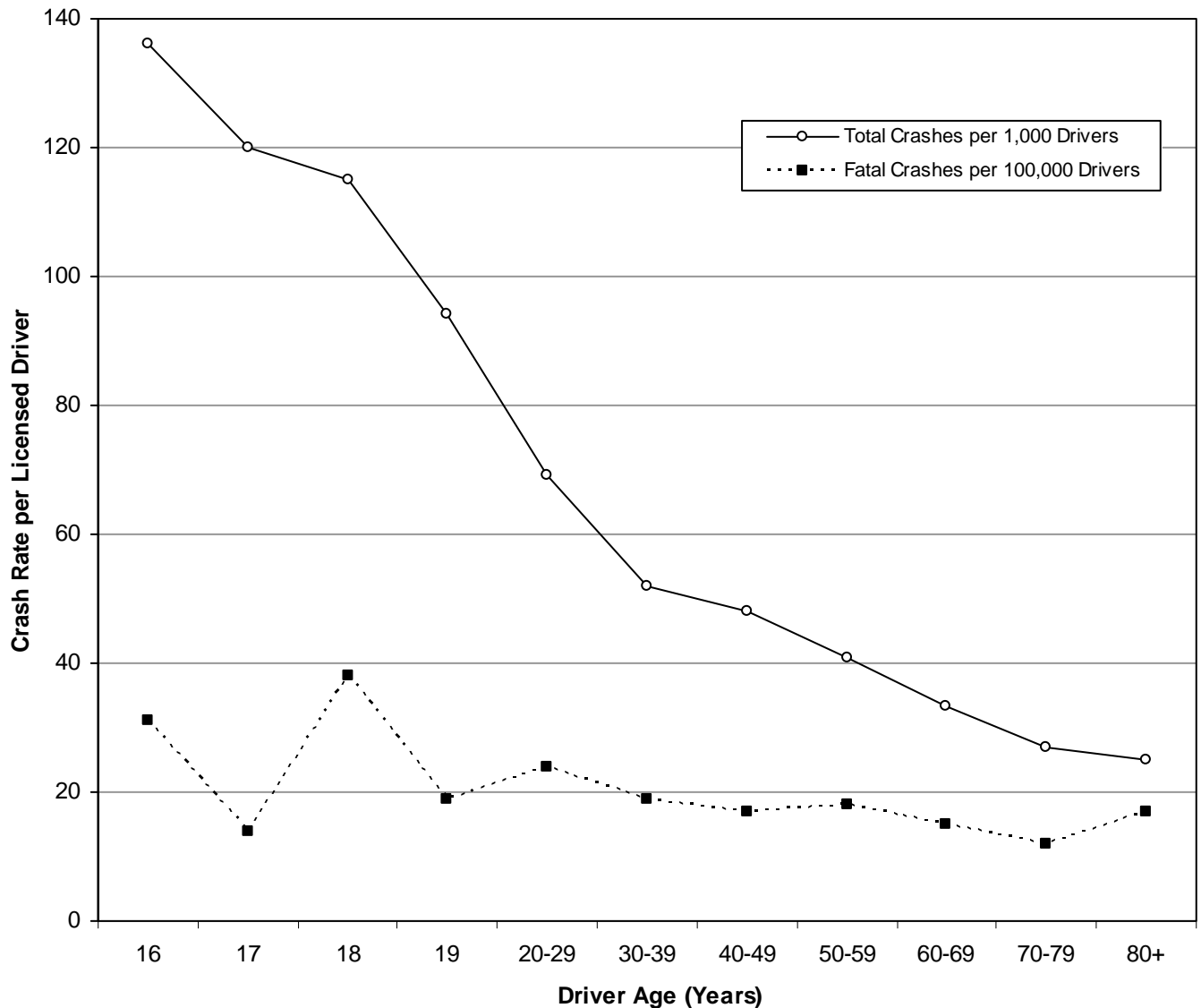
- Of the 32 teenage drivers in fatal crashes, one (3.1%) was impaired by alcohol.

Drivers

Age of Teenage Drivers in Crashes (Utah 2008)

Teenage Drivers												
Age	PDO Crashes			Injury Crashes			Fatal Crashes			Total		
	#	%	Rate per 1,000 Drivers	#	%	Rate per 1,000 Drivers	#	%	Rate per 1,000 Drivers	#	%	Rate per 1,000 Drivers
15	126	1.3%	n/a	65	1.5%	n/a	2	6.3%	n/a	193	1.4%	n/a
16	1,826	19.5%	93.5	826	18.9%	42.3	6	18.8%	0.31	2,658	19.3%	136.1
17	2,396	25.5%	81.4	1,130	25.8%	38.4	4	12.5%	0.14	3,530	25.6%	119.9
18	2,719	29.0%	78.8	1,242	28.4%	36.0	13	40.6%	0.38	3,974	28.8%	115.1
19	2,319	24.7%	63.6	1,111	25.4%	30.5	7	21.9%	0.19	3,437	24.9%	94.3
Total	9,386	100.0%	78.2	4,374	100.0%	36.4	32	100.0%	0.27	13,792	100.0%	114.9

Crash Rate of Licensed Drivers by Age (Utah 2008)



- Drivers aged 16 years had the highest total crash rate per licensed driver (136.1).
- Drivers aged 18 years had the highest fatal crash rate per licensed driver (0.38).

Crash Conditions

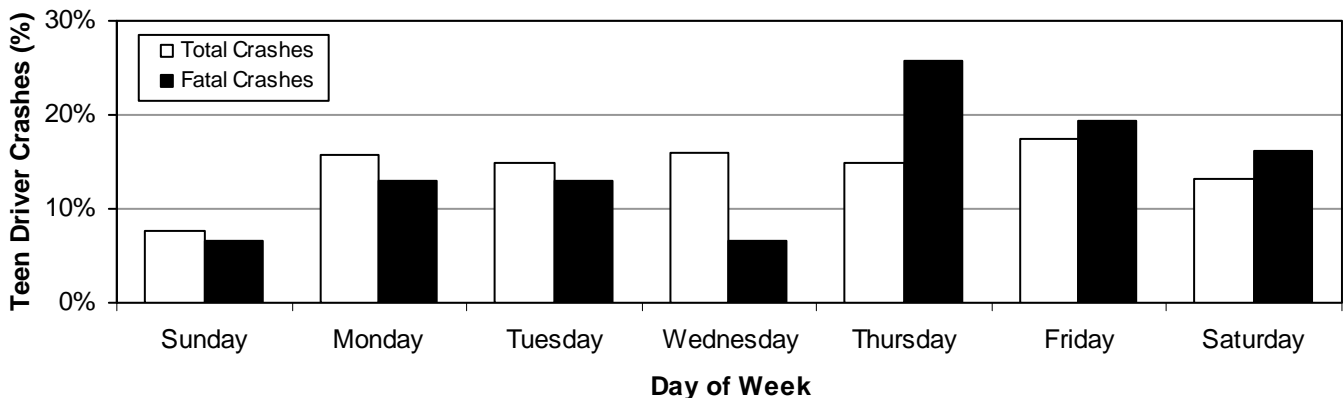
Teenage Driver Crashes by Month (Utah 2008)

Teenage Driver Crashes									
Month	Days in Month	PDO Crashes		Injury Crashes		Fatal Crashes		Total	
		#	Rate per Day	#	Rate per Day	#	Rate per Day	#	Rate per Day
January	31	948	30.6	339	10.9	0	0.00	1,287	41.5
February	29	797	27.5	301	10.4	2	0.07	1,100	37.9
March	31	666	21.5	300	9.7	0	0.00	966	31.2
April	30	595	19.8	340	11.3	1	0.03	936	31.2
May	31	686	22.1	361	11.6	5	0.16	1,052	33.9
June	30	563	18.8	352	11.7	1	0.03	916	30.5
July	31	523	16.9	307	9.9	3	0.10	833	26.9
August	31	610	19.7	345	11.1	5	0.16	960	31.0
September	30	674	22.5	329	11.0	5	0.17	1,008	33.6
October	31	744	24.0	359	11.6	4	0.13	1,107	35.7
November	30	671	22.4	336	11.2	2	0.07	1,009	33.6
December	31	1,035	33.4	338	10.9	3	0.10	1,376	44.4
Total	366	8,512	23.3	4,007	10.9	31	0.08	12,550	34.3

- Overall, December (44.4) and January (41.5) had the highest rates per day for teenage driver crashes.
- The highest rates per day of fatal teenage driver crashes occurred in September, August, and May.

Teenage Driver Crashes by Day of Week (Utah 2008)

Teenage Driver Crashes									
Day of Week	PDO Crashes		Injury Crashes		Fatal Crashes		Total		
	#	%	#	%	#	%	#	%	
Sunday	622	7.3%	344	8.6%	2	6.5%	968	7.7%	
Monday	1,352	15.9%	624	15.6%	4	12.9%	1,980	15.8%	
Tuesday	1,265	14.9%	617	15.4%	4	12.9%	1,886	15.0%	
Wednesday	1,383	16.2%	613	15.3%	2	6.5%	1,998	15.9%	
Thursday	1,289	15.1%	564	14.1%	8	25.8%	1,861	14.8%	
Friday	1,521	17.9%	672	16.8%	6	19.4%	2,199	17.5%	
Saturday	1,080	12.7%	573	14.3%	5	16.1%	1,658	13.2%	
Total	8,512	100.0%	4,007	100.0%	31	100.0%	12,550	100.0%	

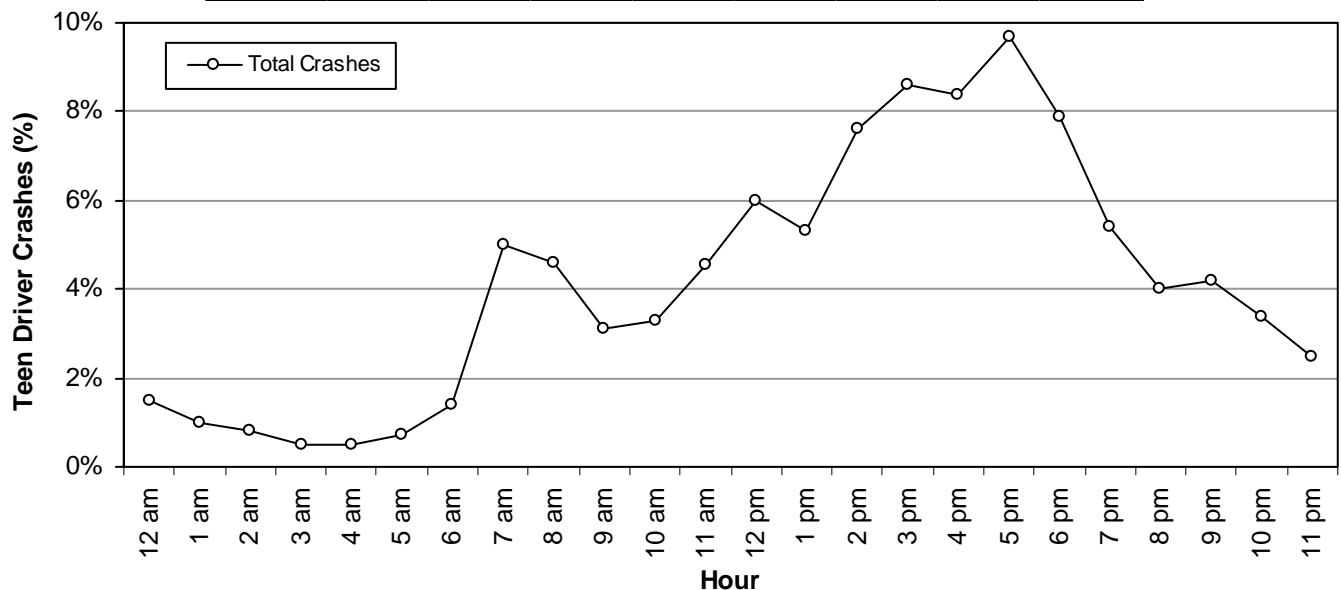


- Overall, the highest percentage of teenage driver crashes occurred on Friday (17.5%).
- The highest percentage of fatal teenage driver crashes occurred on Thursday (25.8%).

Crash Conditions

Teenage Driver Crashes by Hour (Utah 2008)

Teenage Driver Crashes								
Hour	PDO Crashes		Injury Crashes		Fatal Crashes		Total	
	#	%	#	%	#	%	#	%
Midnight	120	1.4%	68	1.7%	0	0.0%	188	1.5%
1 a.m.	78	0.9%	48	1.2%	1	3.2%	127	1.0%
2 a.m.	59	0.7%	41	1.0%	1	3.2%	101	0.8%
3 a.m.	36	0.4%	27	0.7%	0	0.0%	63	0.5%
4 a.m.	37	0.4%	28	0.7%	0	0.0%	65	0.5%
5 a.m.	56	0.7%	29	0.7%	1	3.2%	86	0.7%
6 a.m.	129	1.5%	51	1.3%	0	0.0%	180	1.4%
7 a.m.	460	5.4%	166	4.1%	2	6.5%	628	5.0%
8 a.m.	427	5.0%	152	3.8%	1	3.2%	580	4.6%
9 a.m.	273	3.2%	113	2.8%	2	6.5%	388	3.1%
10 a.m.	288	3.4%	129	3.2%	2	6.5%	419	3.3%
11 a.m.	411	4.8%	156	3.9%	0	0.0%	567	4.5%
Noon	523	6.1%	227	5.7%	1	3.2%	751	6.0%
1 p.m.	453	5.3%	206	5.1%	1	3.2%	660	5.3%
2 p.m.	636	7.5%	309	7.7%	3	9.7%	948	7.6%
3 p.m.	732	8.6%	349	8.7%	1	3.2%	1,082	8.6%
4 p.m.	726	8.5%	323	8.1%	2	6.5%	1,051	8.4%
5 p.m.	795	9.3%	424	10.6%	0	0.0%	1,219	9.7%
6 p.m.	652	7.7%	333	8.3%	1	3.2%	986	7.9%
7 p.m.	467	5.5%	214	5.3%	2	6.5%	683	5.4%
8 p.m.	325	3.8%	176	4.4%	2	6.5%	503	4.0%
9 p.m.	344	4.0%	175	4.4%	5	16.1%	524	4.2%
10 p.m.	271	3.2%	153	3.8%	1	3.2%	425	3.4%
11 p.m.	209	2.5%	108	2.7%	2	6.5%	319	2.5%
Unknown	5	0.1%	2	0.0%	0	0.0%	7	0.1%
Total	8,512	100.0%	4,007	100.0%	31	100.0%	12,550	100.0%



- Teenage driver total crashes were highest from 2:00 p.m. to 6:59 p.m. (after-school hours).
- Fatal teenage driver crashes varied throughout the day and peaked during the 9:00 p.m. hour.

Crash Conditions

Speed Limit of Teenage Driver Crashes (Utah 2008)

Teenage Driver Vehicles								
Speed Limit	PDO Crashes		Injury Crashes		Fatal Crashes		Total	
	#	%	#	%	#	%	#	%
5-15 MPH	57	0.6%	18	0.4%	0	0.0%	75	0.5%
20-25 MPH	1,483	15.8%	570	13.0%	2	6.3%	2,055	14.9%
30-35 MPH	2,343	25.0%	1,189	27.2%	4	12.5%	3,536	25.6%
40-45 MPH	2,035	21.7%	1,130	25.8%	7	21.9%	3,172	23.0%
50-55 MPH	624	6.6%	322	7.4%	7	21.9%	953	6.9%
60-65 MPH	1,165	12.4%	431	9.9%	9	28.1%	1,605	11.6%
70+ MPH	152	1.6%	89	2.0%	2	6.3%	243	1.8%
Unknown	1,527	16.3%	625	14.3%	1	3.1%	2,153	15.6%
Total	9,386	100.0%	4,374	100.0%	32	100.0%	13,792	100.0%

- Over half (57.6% where speed limit was known) of total teenage driver crashes occurred where the speed limit was 30-45 MPH.
- Fatal teenage driver crashes were more likely to occur with higher speed limits. Over one-half (56.3%) of fatal teenage driver crashes occurred where the speed limit was 50 MPH or higher.
- Teenage driver crashes where the speed limit was 50 MPH or higher were 4.4 times more likely to be fatal.
- Studies show that a 5% increase in average speed leads to a 10% increase in injury crashes and a 20% increase in fatal crashes. A 5% decrease in speed leads to a 10% decrease in injury crashes and a 20% decrease in fatal crashes.

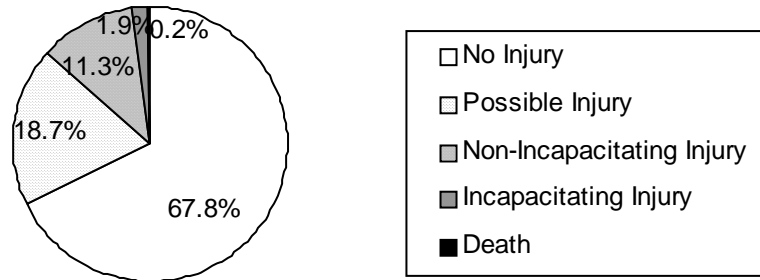
Travel Speed of Teenage Driver Vehicles in Crashes (Utah 2008)

Teenage Driver Vehicles								
Travel Speed	PDO Crashes		Injury Crashes		Fatal Crashes		Total	
	#	%	#	%	#	%	#	%
Stopped	701	7.5%	342	7.8%	0	0.0%	1,043	7.6%
1-9 MPH	782	8.3%	302	6.9%	1	3.1%	1,085	7.9%
10-19 MPH	1,235	13.2%	537	12.3%	2	6.3%	1,774	12.9%
20-29 MPH	1,150	12.3%	488	11.2%	1	3.1%	1,639	11.9%
30-39 MPH	1,140	12.1%	600	13.7%	3	9.4%	1,743	12.6%
40-49 MPH	744	7.9%	427	9.8%	5	15.6%	1,176	8.5%
50-59 MPH	452	4.8%	223	5.1%	3	9.4%	678	4.9%
60-69 MPH	520	5.5%	224	5.1%	5	15.6%	749	5.4%
70-79 MPH	193	2.1%	116	2.7%	3	9.4%	312	2.3%
80-89 MPH	28	0.3%	20	0.5%	4	12.5%	52	0.4%
90+ MPH	5	0.1%	16	0.4%	1	3.1%	22	0.2%
Unknown	2,436	26.0%	1,079	24.7%	4	12.5%	3,519	25.5%
Total	9,386	100.0%	4,374	100.0%	32	100.0%	13,792	100.0%

- Half (50.2% where travel speed was known) of teen driver vehicles in total crashes were traveling 10-39 MPH.
- Teenage driver vehicles in fatal crashes were more likely to be traveling at higher speeds. Over one-half (57.1% of known) of teenage driver vehicles in fatal crashes were traveling 50 MPH or higher.
- Crashes involving teenage driver vehicles traveling 50 MPH or higher were 6.2 times more likely to be fatal.
- The higher the speed the greater the amount of energy that must be absorbed in a crash, hence there is more likelihood of serious injury.

Crash Conditions

Teenage Driver Crash Severity (Utah 2008)



- Similar to all motor vehicle crashes, nearly one-third (31.9%) of teenage driver crashes resulted in some level of non-fatal injury.
- The percentage of fatal teenage driver crashes (0.2%) was similar to all fatal motor vehicle crashes (0.4%).

Teenage Driver Crash Violations (Utah 2008)

Teenage Drivers								
Violations	PDO Crashes		Injury Crashes		Fatal Crashes		Total	
	#	%	#	%	#	%	#	%
Following Too Close	306	26.6%	108	23.2%	0	0.0%	414	25.6%
Improper Lane Change/Travel	242	21.1%	95	20.4%	0	0.0%	337	20.8%
Speed	154	13.4%	57	12.3%	0	0.0%	211	13.0%
Improper Turn	130	11.3%	66	14.2%	0	0.0%	196	12.1%
Negligent Collision	67	5.8%	17	3.7%	0	0.0%	84	5.2%
License Violation	36	3.1%	12	2.6%	0	0.0%	48	3.0%
Improper Lookout	33	2.9%	10	2.2%	0	0.0%	43	2.7%
Failure to Yield Right of Way	26	2.3%	11	2.4%	1	25.0%	38	2.3%
Insurance Violation	25	2.2%	11	2.4%	1	25.0%	37	2.3%
Improper Start or Stop	21	1.8%	14	3.0%	0	0.0%	35	2.2%
Driving Under the Influence	14	1.2%	15	3.2%	0	0.0%	29	1.8%
Failure to Obey Traffic Control Device	13	1.1%	14	3.0%	0	0.0%	27	1.7%
Careless Driving	11	1.0%	6	1.3%	0	0.0%	17	1.1%
Hit and Run	14	1.2%	3	0.6%	0	0.0%	17	1.1%
Reckless Driving	9	0.8%	7	1.5%	0	0.0%	16	1.0%
Equipment Violation	10	0.9%	2	0.4%	0	0.0%	12	0.7%
Registration Violation	8	0.7%	2	0.4%	0	0.0%	10	0.6%
Alcohol/Drug Violation, Other than DUI	4	0.3%	5	1.1%	0	0.0%	9	0.6%
Failure to Stop at Stop Sign	5	0.4%	3	0.6%	0	0.0%	8	0.5%
Improper Passing	6	0.5%	1	0.2%	0	0.0%	7	0.4%
Improper Backing	6	0.5%	0	0.0%	0	0.0%	6	0.4%
Failure to Stop at Red Light	2	0.2%	2	0.4%	0	0.0%	4	0.2%
Seat belt/Child Restraint	3	0.3%	1	0.2%	0	0.0%	4	0.2%
Wrong Side of Road	1	0.1%	1	0.2%	0	0.0%	2	0.1%
Vehicle Homicide	0	0.0%	0	0.0%	1	25.0%	1	0.1%
Other Moving Violation	2	0.2%	2	0.4%	1	25.0%	5	0.3%
Other Non-Moving Violation	1	0.1%	0	0.0%	0	0.0%	1	0.1%
Total	1,149	100.0%	465	100.0%	4	100.0%	1,618	100.0%

- There were 1,618 citations issued to teenage drivers at the scene of the crash. The most common violations were for following too close (25.6%), improper lane change/travel (20.8%), and speed (13.0%).

Crash Conditions

Contributing Factors of Teenage Driver Crashes (Utah 2008)

Teenage Drivers/Vehicles								
Contributing Factors	PDO Crashes		Injury Crashes		Fatal Crashes		Total	
	#	%	#	%	#	%	#	%
Followed Too Closely	1,771	17.7%	726	14.2%	0	0.0%	2,497	16.4%
Failed to Yield Right of Way	1,270	12.7%	764	14.9%	5	7.4%	2,039	13.4%
Speed Too Fast	1,191	11.9%	499	9.8%	10	14.7%	1,700	11.2%
Driver Distraction	703	7.0%	438	8.6%	3	4.4%	1,144	7.5%
Other Improper Driving	660	6.6%	365	7.1%	1	1.5%	1,026	6.7%
Failed to Keep in Proper Lane	667	6.7%	331	6.5%	7	10.3%	1,005	6.6%
Vision Obscured by Weather Condition	490	4.9%	137	2.7%	0	0.0%	627	4.1%
Improper Turn	410	4.1%	210	4.1%	1	1.5%	621	4.1%
Disregard Traffic Signal/Sign	246	2.5%	226	4.4%	3	4.4%	475	3.1%
Ran Off Road	256	2.6%	157	3.1%	8	11.8%	421	2.8%
Overcorrected	231	2.3%	170	3.3%	6	8.8%	407	2.7%
Improper Lane Change	289	2.9%	66	1.3%	1	1.5%	356	2.3%
Swerved or Evasive Action	205	2.0%	106	2.1%	4	5.9%	315	2.1%
Asleep/Fatigue	134	1.3%	109	2.1%	2	2.9%	245	1.6%
Improper Backing	210	2.1%	16	0.3%	0	0.0%	226	1.5%
Driving Under the Influence	93	0.9%	113	2.2%	2	2.9%	208	1.4%
Reckless/Aggressive Driving	88	0.9%	84	1.6%	2	2.9%	174	1.1%
Vehicle Other Defective Condition	118	1.2%	51	1.0%	0	0.0%	169	1.1%
Driver Emotionally Upset	77	0.8%	84	1.6%	1	1.5%	162	1.1%
Vision Obscured by Moving Vehicle	94	0.9%	56	1.1%	3	4.4%	153	1.0%
Hit and Run	119	1.2%	29	0.6%	0	0.0%	148	1.0%
Improper Parking/Stopping	107	1.1%	36	0.7%	0	0.0%	143	0.9%
Other Driver Condition	71	0.7%	63	1.2%	2	2.9%	136	0.9%
Vehicle Brakes	85	0.8%	43	0.8%	0	0.0%	128	0.8%
Vehicle Tires	72	0.7%	28	0.5%	3	4.4%	103	0.7%
Vision Obscured by Other	60	0.6%	40	0.8%	0	0.0%	100	0.7%
Vision Obscured by Glare	64	0.6%	35	0.7%	0	0.0%	99	0.7%
Improper Passing	70	0.7%	17	0.3%	1	1.5%	88	0.6%
Vision Obscured by Parked Vehicle	46	0.5%	23	0.4%	0	0.0%	69	0.5%
Wrong Side/Wrong Way	29	0.3%	20	0.4%	3	4.4%	52	0.3%
Vision Obscured by Building, Sign, etc.	27	0.3%	15	0.3%	0	0.0%	42	0.3%
Windshield or Other Window Obscured	23	0.2%	10	0.2%	0	0.0%	33	0.2%
Driver Illness	14	0.1%	17	0.3%	0	0.0%	31	0.2%
Vision Obscured by Vegetation	12	0.1%	11	0.2%	0	0.0%	23	0.2%
Disregard Road Markings	11	0.1%	11	0.2%	0	0.0%	22	0.1%
Improper Signal	12	0.1%	6	0.1%	0	0.0%	18	0.1%
Total	10,025	100.0%	5,112	100.0%	68	100.0%	15,205	100.0%

- Some form of poor driver performance is present in the majority of crashes. The leading contributing factors for all teenage driver crashes were followed too closely (16.4%), failed to yield right of way (13.4%), and speed too fast (11.2%).
- The leading contributing factors in fatal teenage driver crashes were speed too fast (14.7%) and ran off road (11.8%).
- Compared to drivers of all ages, teenage drivers were more likely to have a contributing factor of followed too closely, failure to yield right of way, and driver distraction.

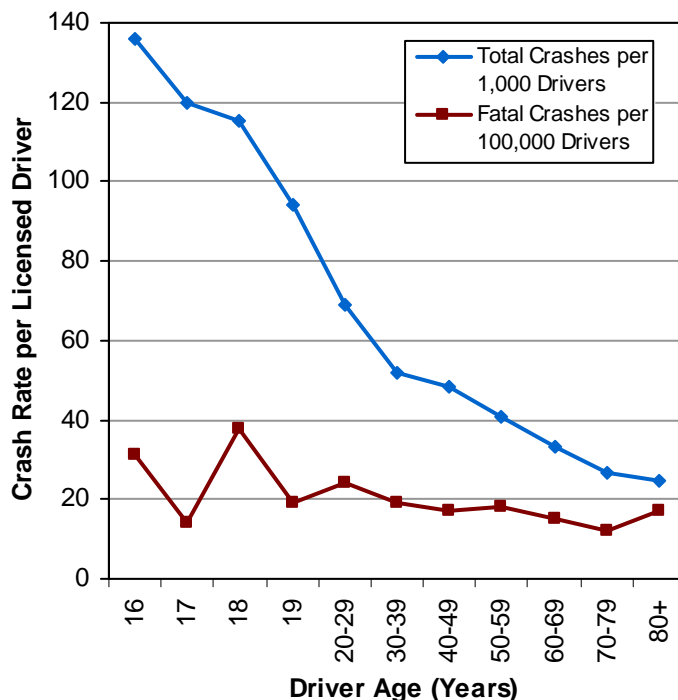
Did you know in 2008:

- Teenage drivers represented 7% of the licensed drivers in Utah, yet they were in nearly one-fourth (22%) of all motor vehicle crashes.
- Teenage drivers were in 12,550 motor vehicle crashes which resulted in 6,171 injured persons and 34 deaths.
- Teenage drivers were 2.5 times more likely to be in a crash than drivers of other ages.
- Although teen drivers have the highest crash rates of any drivers, teen driver crashes have decreased the last ten years.

Teenage Drivers (15-19 years)

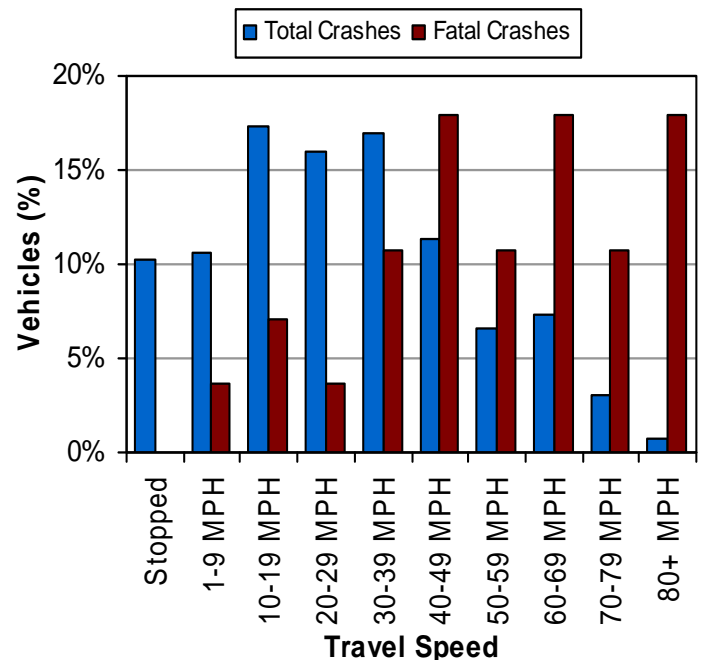


Crash Rates per Licensed Driver by Age (Utah 2008)



- Drivers aged 16 years had the highest total crash rate per licensed driver.

Teenage Driver Crashes by Travel Speed (Utah 2008)



- Crashes involving teenage driver vehicles traveling 50 MPH or higher were 6.2 times more likely to be fatal.

Leading Contributing Factors of Teenage Driver Crashes (Utah 2008)

All Teenage Driver Crashes

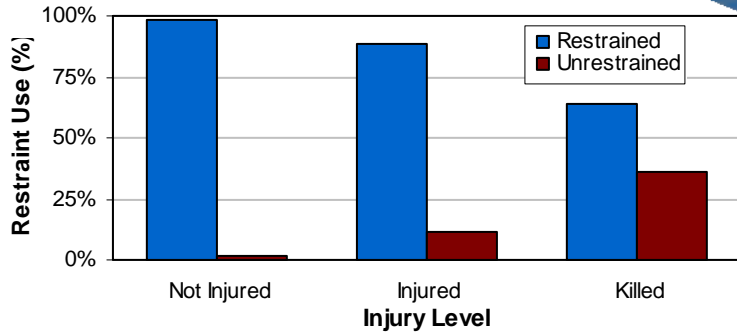
1. Followed Too Closely (20%)
2. Failed to Yield Right of Way (16%)
3. Speed Too Fast (14%)
4. Driver Distraction (9%)
5. Failed to Keep in Proper Lane (8%)

Fatal Teenage Driver Crashes

1. Speed Too Fast (32%)
2. Ran Off Road (26%)
3. Failed to Keep in Proper Lane (23%)
4. Overcorrected (19%)
5. Failed to Yield Right of Way (16%)



Restraint Use of Teen Drivers and Their Passengers (Utah)



Teenage Drivers (15-19 years)



Graduated Driver Licensing (GDL) Law in Utah

GDL allows beginning drivers the chance to build experience before they are exposed to more high-risk situations, such as carrying teen passengers and nighttime driving. Easing young drivers onto the roadways can reduce the number of traffic crashes involving young drivers.

Learner Permit

A person must be at least 15 years old to apply for a learner permit. Anyone who is under 18 years of age is required to hold a learner permit for six months before applying for a license.

Supervised Driving

Everyone under 18 years of age applying for a license must complete 40 hours of driving, of which at least 10 hours must be during night hours. This allows beginning drivers to practice and gain supervised experience.

Driver License

A person must be at least 16 years of age to get a driver license. Everyone who has never been licensed to drive a motor vehicle must complete an approved driver education course.

Night-time Restrictions

Anyone under the age of 17 years may not drive from midnight to 5:00 a.m. except in a limited number of situations. The majority of fatal teen crashes take place at night.

Passenger Restrictions

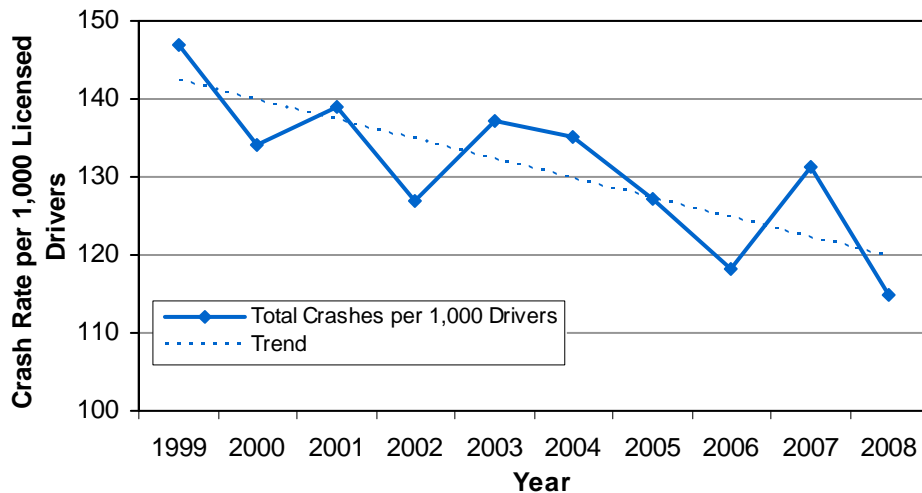
For the first six months of licensure, teen drivers can not drive with any passenger who is not an immediate family member with a few exceptions. Teen drivers are more likely to crash with passengers in the car, especially teen passengers. The more passengers, the greater the risk.

Seatbelt Restrictions

All occupants under the age of 19 years must be properly restrained in a motor vehicle. This is a primary law which means a person may be stopped by law enforcement solely for that offense.

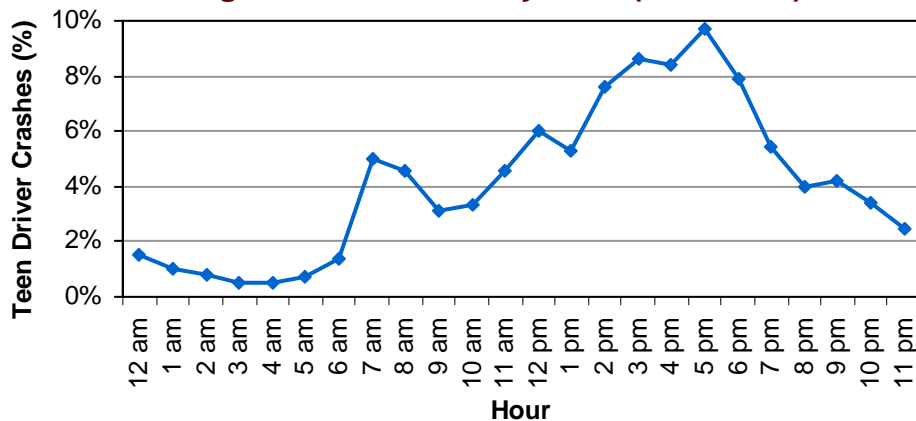
- 36% of teen drivers and their passengers killed in crashes were unrestrained.
- Unrestrained teen drivers and their passengers were 15 times more likely than restrained occupants to be killed in a crash.

Teenage Driver Crash Trend (Utah 1999-2008)



- The teenage driver crash rate per licensed driver decreased 22% from 1999 to 2008.

Teenage Driver Crashes by Hour (Utah 2008)



- Teenage-driver crashes peaked during after-school hours (2:00 p.m.-6:59 p.m.).