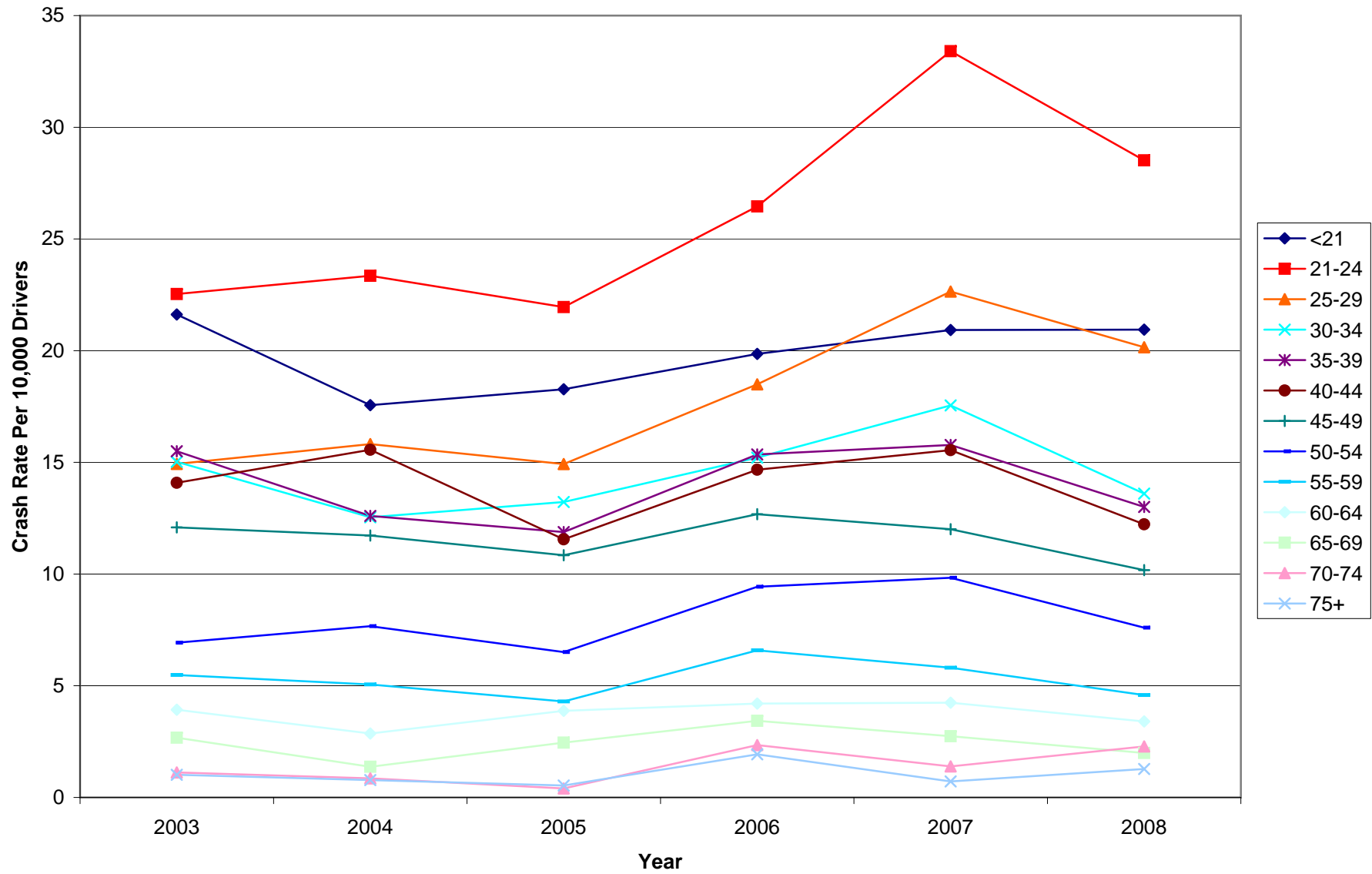


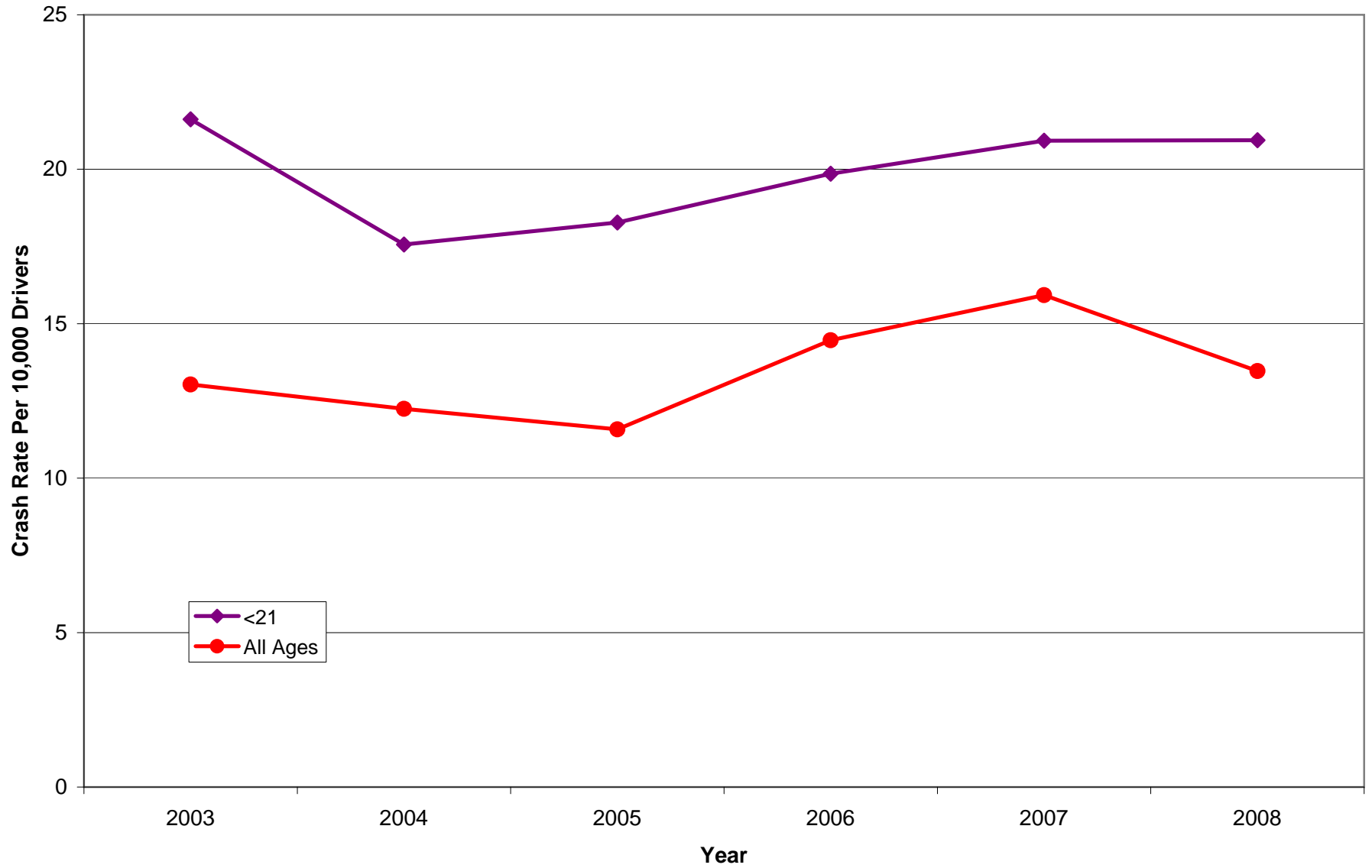
Alcohol-Impaired Drivers

Age	Licensed Drivers						Drivers in Alcohol Crashes						Rate per 10,000 Drivers					
	2003	2004	2005	2006	2007	2008	2003	2004	2005	2006	2007	2008	2003	2004	2005	2006	2007	2008
<21	141,090	158,863	167,448	173,271	162,013	158,542	305	279	306	344	339	332	21.6	17.6	18.3	19.9	20.9	20.9
21-24	163,752	160,578	174,945	174,230	161,639	160,248	369	375	384	461	540	457	22.5	23.4	21.9	26.5	33.4	28.5
25-29	188,914	206,698	228,516	234,696	219,909	220,315	282	327	341	434	498	444	14.9	15.8	14.9	18.5	22.6	20.2
30-34	163,082	165,042	183,698	191,960	189,206	197,783	245	207	243	292	332	269	15.0	12.5	13.2	15.2	17.5	13.6
35-39	135,491	142,817	156,553	164,145	159,695	164,532	210	180	186	252	252	214	15.5	12.6	11.9	15.4	15.8	13.0
40-44	139,127	140,069	149,750	148,618	140,857	141,515	196	218	173	218	219	173	14.1	15.6	11.6	14.7	15.5	12.2
45-49	128,234	141,577	149,438	152,226	148,254	148,401	155	166	162	193	178	151	12.1	11.7	10.8	12.7	12.0	10.2
50-54	111,132	127,796	133,646	138,869	138,262	140,783	77	98	87	131	136	107	6.9	7.7	6.5	9.4	9.8	7.6
55-59	85,703	104,745	109,408	115,363	115,388	119,988	47	53	47	76	67	55	5.5	5.1	4.3	6.6	5.8	4.6
60-64	66,253	76,785	79,971	85,698	89,567	94,023	26	22	31	36	38	32	3.9	2.9	3.9	4.2	4.2	3.4
65-69	52,367	58,258	61,115	64,094	65,700	70,319	14	8	15	22	18	14	2.7	1.4	2.5	3.4	2.7	2.0
70-74	44,614	46,771	49,636	51,204	50,381	52,574	5	4	2	12	7	12	1.1	0.9	0.4	2.3	1.4	2.3
75+	98,633	77,129	93,147	98,290	83,392	86,421	10	6	5	19	6	11	1.0	0.8	0.5	1.9	0.7	1.3
Unknown	0	0	0	0	0	0	38	25	30	103	116	93	n/a	n/a	n/a	n/a	n/a	n/a
Total	1,518,392	1,607,128	1,737,271	1,792,664	1,724,263	1,755,444	1,979	1,968	2,012	2,593	2,746	2,364	13.0	12.2	11.6	14.5	15.9	13.5

Alcohol Crash Rate Per 10,000 Licensed Drivers, Utah, 2003-2008



Alcohol Crash Rate Per 10,000 Licensed Drivers, Utah, 2003-2008



Alcohol Crash Rate Per 10,000 Licensed Drivers, Utah, 2003-2008

