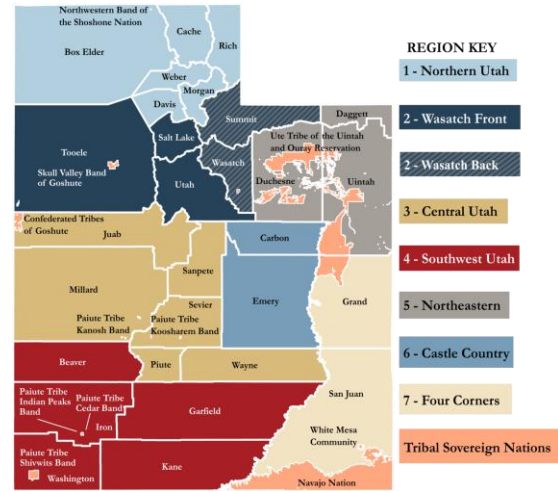




# STATE OF UTAH SITUATION REPORT

This information is from the previous 24 hours  
April 30, 2023 as of 07:00



## State Lifeline Status



[CLICK HERE](#) TO SEE A CURRENT MAP FOR INCIDENTS STATEWIDE

## Significant State Activity

### Other Immediate Concerns

- **Active** The most significant rises are forecasted for the Lower Weber River at Plain City, the Little Bear at Paradise, and East Canyon Creek near Jeremy Ranch downstream to East Canyon Reservoir. [See Hydrologic Outlook here](#) [NWS Twitter]
- **Active** Current flood risk is spring runoff, increasing streamflows, and snowmelt. Some reported flood-related landslides are being monitored.

**TLP: WHITE**

Disclosure is not limited.

## Current State (SERT) Actions

- **Active** Activated Emergency Support Functions: ESF #1, ESF #5, ESF #14, ESF #15, Logistics, VDCT, Volunteer Agency Liaison (VAL), and Finance.

## Current Operational Requests

- 10 active requests are in progress regarding State sandbag resources, management of State volunteers, additional SEOC staff, other flooding response resources, and information regarding the ability to assist with flooding from USACE. 1 active request is pending additional information for flooding response. *[WebEOC]*

## Region 1

### Cache County

- **Active** The Bureau of Reclamation, Utah Division of Water Resources, and Cache County are actively monitoring the Hyrum Dam for potential high-flow releases in the Little Bear River. *[Bureau of Reclamation, Interagency Correspondence]*
- **Active** Due to the heavy snowpack, the county has also determined that it is necessary and appropriate to [extend the seasonal restrictions](#) on county roads to motorized vehicles until at least May 15th. *[Cache County]*

### Morgan County

- **Active** The National Weather Service (NWS) has advised the County that East Canyon Creek will go above flood stage on Sunday and into the first part of next week. *[LNO Correspondence]*

## Region 2

### Salt Lake County

- **New** Sugar House Park is closed through the weekend for continued controlled releases. *[SLCo Parks & Recreation]*
- **New** SR-190 to close today (4/30) from 12pm - 5pm due to avalanche hazard *[UDOT Canyons]*
- **New** SR-210 will be Closed today (4/30) at 9am due to avalanche hazard. No ETO for any public travel periods. *[UDOT Canyons]*
- **Active** Due to current hillside conditions, Ann's Trail in Draper is indefinitely closed to public use. *[Draper City]*

## Region 3

- No significant updates to report at this time.

## Region 4

### Garfield County

- **Update** A foot of the river bank remains in Old Town Hatch before it starts flowing over the banks. Current sandbagging efforts from homeowners in the area have been preventing this issue. *[LNO Correspondence]*

### Kane County

- **New** Home and cabin damage were reported in the Duck Creek area. Streams are rising currently but no flooding. *[LNO Correspondence]*

### Washington County

- **New** Rivers are still high and gradually getting a little more flow at their peak flow times but still staying in their banks and not threatening any structures. *[LNO Correspondence]*

## Region 5

- No significant updates to report at this time.

## Region 6/7

### Grand County

- **Active** The University of Utah's Field Station at Rio Mesa along the Dolores River has many structures at risk for flooding due to spring runoff combined with big spill releases from McFee Reservoir scheduled for May 4th and is factored into the river forecast. Another release is scheduled for May 5th but has not yet been factored into the calculations. *[LNO Correspondence]*

## Tribal Nations

- No significant updates to report at this time.

*Impact and activity information is provided by Local Emergency Management partners, the State Emergency Response Team (SERT), and private and non-profit partners through various coordinating communication channels. This is a developing situation, and information may quickly become outdated. Additional situation reports may be made as verified information becomes available.*

**TLP: WHITE**

*Disclosure is not limited.*

## EMERGENCY DECLARATIONS

JURISDICTION	EXPIRES	JURISDICTION	EXPIRES
<a href="#">Draper City</a>	5/24/23	<a href="#">Morgan County</a>	5/18/23
<a href="#">Emigration Canyon</a>	5/12/23	<a href="#">Salt Lake City</a>	5/12/23
<a href="#">Juab County</a>	5/17/23	<a href="#">Salt Lake County</a>	5/13/23
<a href="#">Kaysville City</a>	5/19/23	<a href="#">State of Utah</a>	5/18/23
<a href="#">Millard County</a>	8/31/23	<a href="#">Washington County</a>	5/19/23
<a href="#">Millcreek City</a>	5/13/23		

## WEATHER

### WEATHER RISK OUTLOOK

Risk levels incorporate potential impacts from weather hazards and likelihood of occurrence for a reasonable worst case scenario.

	Sun 4/30	Mon 5/1	Tue 5/2	Wed 5/3	Thu 5/4	Fri 5/5	Sat 5/6
Northern Utah and Uinta County, WY	Snowmelt River Flooding	Snowmelt River Flooding	Snowmelt River Flooding	Snowmelt River Flooding	Snowmelt River Flooding	River Flooding	River Flooding
Central Utah	Snowmelt	Snowmelt	Snowmelt	Snowmelt	Snowmelt		
Southern Utah	Snowmelt	Snowmelt	Snowmelt	Snowmelt	Snowmelt		

Risk Levels	Little to None	Minor	Moderate	Major	Extreme
-------------	----------------	-------	----------	-------	---------

This forecast is accurate as of 4/30/23 at 0253

For a more detailed forecast, click [here](#).

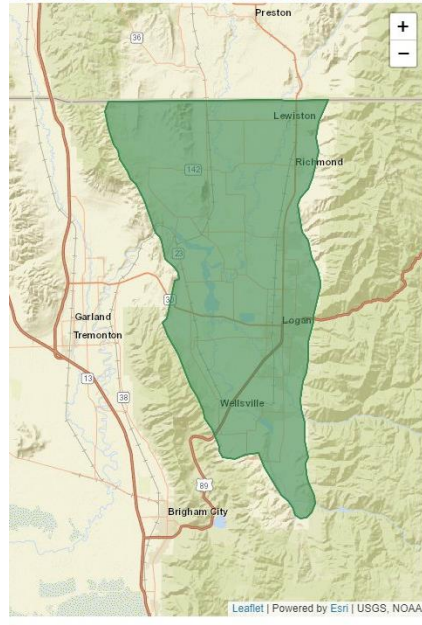
- **New** A combination of increased releases and snowmelt may cause the Little Bear River below Hyrum Reservoir to Cutler Reservoir to exceed safe channel capacity. Minor flooding is possible in this area.
- **Update** As of 3 AM Sunday, the rivers most at risk of reaching or exceeding flood stage in the next few days include the Little Bear River near Paradise, East Canyon Creek near Jeremy Ranch to East Canyon Reservoir, and the Lower Weber near Plain City. Flood watches are in effect for these rivers. Monitor forecasts for potential upgrades.
- **Update** [Flood Watch](#) for Cache, Davis, Salt Lake, and Weber Counties until further notice.
- Cooling temperatures Thursday into Friday will slow any remaining snowmelt.
- A significant warming trend will bring temperatures near record levels this weekend into next week. This will accelerate snowmelt and cause all rivers, streams, and creeks to run high, fast, and cold.

## HYRUM RESERVOIR

**TLP: WHITE**

*Disclosure is not limited.*

**Flood Watch issued April 30 at 1:33AM MDT until May 5 at 11:00AM MDT by NWS Salt Lake City UT**



\* WHAT...Flooding caused by snowmelt continues to be possible.

\* WHERE...A portion of Utah, including the following area, Cache Valley/Utah Portion.

\* WHEN...Through Friday morning.

\* IMPACTS... Excessive runoff may result in flooding along the Little Bear River below Hyrum Reservoir.

\* ADDITIONAL DETAILS...  
- <http://www.weather.gov/safety/flood>

You should monitor later forecasts and be alert for possible Flood Warnings. Those living in areas prone to flooding should be prepared to take action should flooding develop.

[Link to this watch](#)

## ADDITIONAL RIVER FLOOD WATCHES

**April 30 at 1:20AM MDT by NWS Salt Lake City UT**



\* WHAT...Flooding is possible.

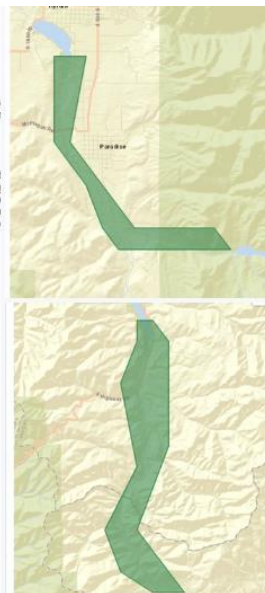
\* WHERE... The Lower Weber River At Plain City.

\* WHEN... Until further notice.

\* IMPACTS... At 27.0 feet, flooding will occur along the near Plain City, affecting local farmland adjacent to the River.

\* ADDITIONAL DETAILS...  
- At 1 AM MDT Sunday the stage was 24.5 feet.  
- At 1 AM MDT Saturday, the river is rising. This trend forecast to continue through at least Tuesday evening.  
- Forecast... Flood stage is forecast to be reached Monday afternoon. The river is forecast to peak at 27.5 feet Tuesday evening, potentially remaining above flood stage through Friday evening.  
- Flood stage is 27.0 feet  
- <http://www.weather.gov/safety/flood>

[Link to this watch](#)



\* IMPACTS... At 5.7 feet, minor flooding will affect farmland and low lying areas adjacent to the Little Bear River near the town of Paradise.

\* ADDITIONAL DETAILS...  
- At 1 AM MDT Sunday the stage was 9.13 feet.  
- The river has crested for the night and is forecast to decrease stage through Sunday morning, rising again this afternoon into tonight.  
- Forecast... Flood stage may be reached late this evening into tonight, with diurnally driven peaks each evening into the overnight period near to above flood stage through at least Thursday night.  
- Flood stage is 5.7 feet.  
- <http://www.weather.gov/safety/flood>

[Link to this watch](#)

\* WHEN... From this evening until further notice.

\* IMPACTS... At 8.1 feet, minor flooding is expected along East Canyon Creek from Jeremy Ranch downstream to East Canyon Reservoir. Minor inundation is expected at the Jeremy Ranch Golf Course and areas adjacent to the creek downstream.

\* ADDITIONAL DETAILS...  
- At 1 AM MDT Sunday the stage was 7.65 feet.  
- East Canyon Creek has likely crested for the night and will decrease in stage slightly through Sunday morning before increasing once again this afternoon and evening.  
- Forecast... Flood stage may be reached tonight, with diurnally driven peaks in the evening into the overnight hours above flood stage possible through Tuesday night. Current forecast peak is expected near 8.4 feet Monday night.  
- Flood stage is 8.1 feet.  
- <http://www.weather.gov/safety/flood>

[Link to this watch](#)

Useful Links for Flooding Awareness:

[Floods.Utah.Gov](http://Floods.Utah.Gov)

- [View and Download Flood Maps](#) | [NWS SLC Twitter](#) | [Reservoir Levels](#) | [Snow Water Equivalent](#) | [SNOTEL](#) | [Streamflow Gauges](#) | [Avalanche Risk](#) | [Drought Monitor](#) | [Water Dashboard](#) | [River Levels](#) | [NOAA Spring Flood Outlook](#)

Useful Links for Landslide Awareness:

[Utah Geologic Hazards Portal](#) | [Landslide Current Events](#)

Useful Links for Wildfire Safety Awareness:

- [UT Public Wildfire Dashboard](#) | [Public Safety Power Shutoff Map](#) | [Statewide Fire Restrictions](#) | [Smoke & Air Quality](#) | [Fire & Smoke Map](#) | [Alert Wildfire Cameras](#) | [Utah Fire Twitter](#)

### Utah Division of Emergency Management

[dem.utah.gov](http://dem.utah.gov)

For questions or comments regarding this report, call 801-538-3400 or email [esf05planning@utah.gov](mailto:esf05planning@utah.gov).

**TLP: WHITE**

Disclosure is not limited.

## Acronyms

ESF - Emergency Support Function - <a href="#">ESF Purposes</a>	DEM - (Utah) Division of Emergency Management
ESF #1 - Transportation	Hwy - Highway
ESF #2 - Communications	I - Interstate
ESF #3 - Public Works and Engineering	LNO - (State to Local) Liaison
ESF #4 - Firefighting	NOAA - National Oceanic and Atmospheric Administration
ESF #5 - Planning	NWS - National Weather Service
ESF #6 - Mass Care	PIO - Public Information Officer
ESF # 7 - Resource Support	SEOC - State Emergency Operations Center
ESF #8 - Health and Medical	SERT - State Emergency Response Team
ESF #9 - Search and Rescue	SLC - Salt Lake City
ESF #10 - Hazardous Materials	SLCo - Salt Lake County
ESF #11 - Agriculture, Food, Cultural Resources, and Pets	SNOTEL - SNOpack TELEmetry
ESF #12 - Energy	SR - State Route
ESF #13 - Law Enforcement	TLP - <a href="#">Traffic Light Protocol</a>
ESF #14 - Disaster Recovery	UDOT - Utah Department of Transportation
ESF #15 - Public Information	UTC - Coordinated Universal Time
ESF #16 - Military Support	USACE - United States Army Corps of Engineers
	UTNG - Utah National Guard
	VAL - Volunteer Agency Liaison
	VDCT - Volunteer and Donations Coordination Team
	WB - Westbound