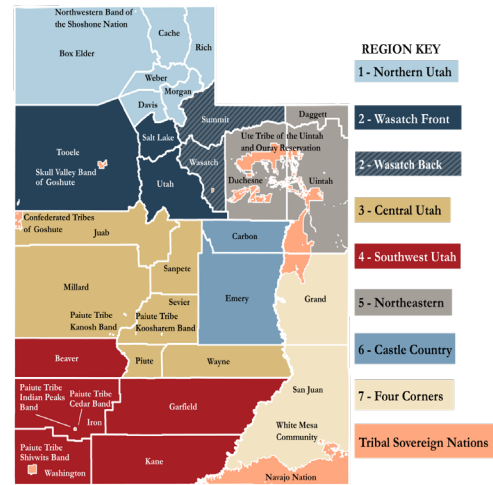




STATE OF UTAH SITUATION REPORT

This information is from the previous 24 hours
May 12, 2023 as of 0700



State Lifeline Status



[CLICK HERE](#) TO SEE A CURRENT MAP FOR INCIDENTS STATEWIDE

Significant State Activity

Active Governor Spencer Cox has announced that he is calling the legislature into a special session on May 17th to discuss ongoing flooding and the need to possibly extend the State Emergency Declaration. [Utah Legislature]

Other Immediate Concerns

- Active** The most significant rises are forecasted for the South Fork of the Ogden River and Bear River at Corinne affecting Box Elder County. [See Flood Warnings here](#) [NWS Twitter]
- Active** Snowmelt due to warm temperatures and upstream dam releases will continue to result in increased river flows. Some reported flood-related landslides are being monitored.

TLP: WHITE

Disclosure is not limited.

Current State (SERT) Actions

- **New** The continuity of operations plan (COOP) will be enacted from 5/11 to 5/15. Due to planned maintenance at the SEOC, the Emergency Coordination Center in Taylorsville will be active in support of the state's level 2 (partial) activation.
- **Active** May 1st [Utah Water Supply Outlook Report](#) provided by the Natural Resources Conservation Service (NRCS)
- **Active** Activated Emergency Support Functions: ESF #1, ESF #3, ESF #5, ESF #7, ESF #11, ESF #13, ESF #14, ESF #15, ESF #16, Logistics, VDCT, Volunteer Agency Liaison (VAL), Finance, and Air Operations.

Current Operational Requests

- **Active** 10 active requests are in progress regarding various flood response and mitigation resources. *[WebEOC]*

Region 1

Box Elder County

- **Active** Garland City culinary water treatment plant continues to be impacted by flooding. They are continuing to pump overflow from the treatment facility and will continue to monitor all locations.

Cache County

- **Active** The Bureau of Reclamation, Utah Division of Water Resources, and Cache County are actively monitoring the Hyrum Dam for potential high-flow releases into the Little Bear River. *[Bureau of Reclamation, Interagency Correspondence]*
- **Active** Extending seasonal restrictions on county roads to motorized vehicles until at least May 15th. *[Cache County]*

Weber County

- **New** A mudslide occurred 5/10 in Eden. The county is continuing to monitor and divert groundwater that is coming from an area above the affected resident/community to help mitigate future threats from runoff.
- **New** Ogden Canyon has been reopened to one way traffic with a traffic signal in the canyon. They've made a repair to the eroded river wall and they will monitor it for the next couple of days to see if the repair holds before they open the entire road.
- **Active** The Bureau of Reclamation is actively monitoring the Causey Reservoir, overflow into the spillway began during the morning of 5/4/23 and is ongoing. *[Bureau of Reclamation, LNO Correspondence]*

Region 2

Salt Lake County

- **Active** Salt Lake County is working with UDOT to protect the Big Cottonwood Water Treatment Plant from possible flooding. *[LNO Correspondence]*
- **Active** Sugar House Park will be closed to vehicles through at least May 14th as controlled releases from Mountain Dell and Little Dell Reservoirs continue to fill the park's retention pond. *[SLCo Parks & Recreation Twitter]*
- **Active** SR-190 and SR-210 are being monitored and assessed daily to determine if/when road closures are needed for land/mudslides, avalanches, or other hazards. Closures are possible at any time. *[UDOT Cottonwood Canyons]*

Summit County

- **Active** In the [Town of Echo](#), there is currently a public notice to boil water due to contamination from flooding

Utah County

- **Active** In [Vivian Park](#) there is currently a public notice to boil water due to contamination from flooding.

Region 3

- No significant updates to report at this time.

Region 4

- No significant updates to report at this time.

Region 5

Uintah County

- **Active** There was a spill notice on the fish hatchery at Jones Hole. Flooding overwhelmed the clarifying settling pond resulting in accumulated settleable solids being washed downstream. Water is currently being diverted upstream.
- **Active** Green River is expected to be in flood action stage starting Friday and near flood stage Sunday. It will likely remain above action stage into next week. Sand and sandbags available at the Jensen fire station. No reports of flooding at this time.

Duchesne County

- **Active** Rivers are remaining inside the bank level. Sand and sandbags are available for the community in several locations.

Region 6/7

Grand & Emery County

- **New** The Tusher Dam on the Green River that runs along the border of each county has breached. Water is coming up and around the dam eroding the sides. Emergency managers are working with the Colorado and Green River Management, the canal company (owner of the dam), and floodplain administrators to discuss mitigation efforts and protective actions. No infrastructure or homes are threatened at this time.

Tribal Nations

- No significant updates to report at this time.

TLP: WHITE

Disclosure is not limited.

Impact and activity information is provided by Local Emergency Management partners, the State Emergency Response Team (SERT), and private and non-profit partners through various coordinating communication channels. This is a developing situation, and information may quickly become outdated. Additional situation reports may be made as verified information becomes available.

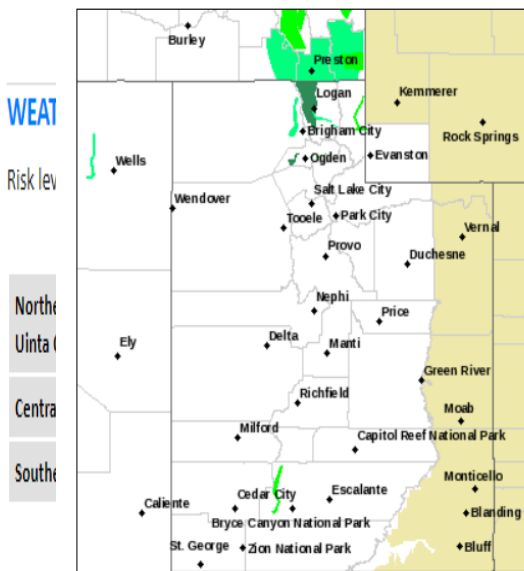
EMERGENCY DECLARATIONS					
JURISDICTION	EXPIRES	JURISDICTION	EXPIRES	JURISDICTION	EXPIRES
Draper City	5/24/23	Millard County	8/31/23	Springville City	5/30/23
Emigration Canyon	5/12/23	Millcreek City	6/31/23	Salt Lake City	5/12/23
Garfield County	7/3/23	Morgan County	5/18/23	Salt Lake County	6/13/23
Juab County	8/31/23	North Ogden City	6/2/23	State of Utah	5/18/23
Kaysville City	5/19/23	Ogden City	6/2/23	Washington County	5/19/23
Marriott-Slaterville City	6/1/23	Spanish Fork City	5/31/23	Weber County	6/1/23

WEATHER

This forecast is accurate as of 5/12/23 at 0700
For a more detailed forecast, click [here](#).

- **Update Flood Warnings** are in effect in the following areas:
 - Bear River at Corinne
 - South Fork of the Ogden River near Huntsville
 - Sevier River near Hatch
 - Areal Flooding Warning - Bear River from below Woodruff Narrows Reservoir northward to the Utah/Wyoming state line
- **Another warmup this weekend into next week will likely cause additional rises on area creeks, rivers and streams.**

WEATHER FORECAST MAP



Watches, Warnings & Advisories

Flood Warning

Flood Advisory

Flood Watch

Hazardous Weather Outlook

Zoom Out

Useful Links for Flooding Awareness:

[Floods.Utah.Gov](#)

[View and Download Flood Maps](#) | [NWS SLC Twitter](#) | [Reservoir Levels](#) | [Snow Water Equivalent](#) | [SNOTEL](#) | [Streamflow Gauges](#) | [Avalanche Risk](#) | [Drought Monitor](#) | [Water Dashboard](#) | [River Levels](#) | [NOAA Spring Flood Outlook](#)

Useful Links for Landslide Awareness:

[Utah Geologic Hazards Portal](#) | [Landslide Current Events](#)

Useful Links for Wildfire Safety Awareness:

[Utah Public Wildfire Dashboard](#) | [Public Safety Power Shutoff Map](#) | [Statewide Fire Restrictions](#) | [Smoke & Air Quality](#) | [Fire & Smoke Map](#) | [Alert Wildfire Cameras](#) | [Utah Fire Twitter](#)

Utah Division of Emergency Management

River Flooding

For questions or comments regarding this report, call 801-538-3400 or email esf05planning@utah.gov.

Last Map Update: Fri, May. 12, 2023 at 6:07:45 am MDT

TLP: WHITE

Disclosure is not limited.

Acronyms		ESFs
DCPW - Davis County Public Works	SNOTEL - SNOpack TELEmetry	ESF - Emergency Support Function - ESF Purposes
DEM - (Utah) Division of Emergency Management	SUU - Southern Utah University	ESF #1 - Transportation
DNR - (Utah) Department of Natural Resources	SR - State Route	ESF #2 - Communications
EB - Eastbound	TLP - Traffic Light Protocol	ESF #3 - Public Works and Engineering
ETO - Estimated Time Opening	UDAF - Utah Department of Agriculture & Food	ESF #4 - Firefighting
Hwy - Highway	UDOT - Utah Department of Transportation	ESF #5 - Planning
I - Interstate	UGS - Utah Geological Survey	ESF #6 - Mass Care
LCC - Little Cottonwood Canyon	UHP - Utah Highway Patrol	ESF #7 - Resource Support
LNO - (State to Local) Liaison Officer	US - United States	ESF #8 - Health and Medical
MP - Mile Point	USACE - United States Army Corps of Engineers	ESF #9 - Search and Rescue
NB - Northbound	UT - Utah	ESF #10 - Hazardous Materials
NOAA - National Oceanic and Atmospheric Administration	UTC - Coordinated Universal Time	ESF #11 - Agriculture, Food, Cultural Resources, and Pets
NWS - National Weather Service	UTNG - Utah National Guard	ESF #12 - Energy
PIO - Public Information Officer	VAL - Volunteer Agency Liaison	ESF #13 - Law Enforcement
RMP - Rocky Mountain Power	VOAD - Voluntary Organizations Active in Disaster	ESF #14 - Disaster Recovery
SEOC - State Emergency Operations Center	VDCT - Volunteer and Donations Coordination Team	ESF #15 - Public Information
SERT - State Emergency Response Team	WB - Westbound	ESF #16 - Military Support
SLC - Salt Lake City	WBWCD - Weber Basin Water Conservancy District	
SLCo - Salt Lake County	SNOTEL - SNOpack TELEmetry	